

LATERAL FLOW MEMBRANES

This membrane applies immunochromatography for lateral flow assays.

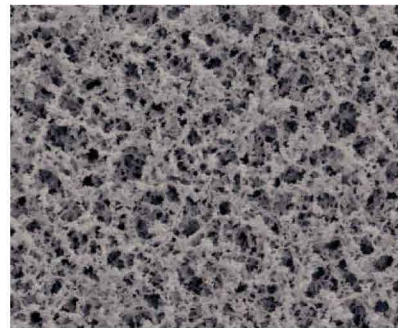


■Features

- Use Nitrocellulose which has high protein absorption ability as main material; most suitable for lateral flow assays using immunochromatography.
- 6 grades in total, able to line-up capillary flow rate.
- Roll, sheet and sample for exams are all available.
- Backing films made by Polyethylene terephthalate maintains high strength.
- Strict management of every master roll to ensure high quality products with high reliability.

※Roll with effective dimensions of 25mm×100m.

■Membrane Surface (Electron Microscope Image)



■Main Applications

- Used as examination kits applying immunochromatography in the following fields as shown below.
 - POTC examination kits for infection and Cancer marker
 - OTC examination kits for pregnancy test and Ovulation day test
 - Allergen examination kits for food inspection

■Typical Characteristics

Grade		I AB075	I AB090	I AB120	I AB135	I AB180	I AB240
Material	Membrane	Mixed Cellulose Esters					
	Backing Films	Polyethylene Terephthalate					
Capillary Flow Rate※1		75	90	120	135	180	240
Thickness (μm) ※2		220					

※1 CFR indicates the time required to absorb 40mm pure water when put one side of the membrane inside the same pure water.

※2 Contains backing films.

■Strict quality control to support high reliability

Control capillary flow rate and thickness of every master roll, provide products with consistent and high quality.

Product Name		I AB075	I AB090	I AB120	I AB135	I AB180	I AB240
CFR (sec/40mm) ^{※1}	Average Value in one Master Roll	75±8	90±9	120±12	135±14	180±18	240±24
	Control range of all Master Rolls	75±19	90±23	120±30	135±34	180±45	240±60
Thickness (μm) ^{※2}	Average Value in one Master Roll	220±13					
	Control range of all Master Rolls	220±26					

^{※1} CFR indicates the time required to absorb 40mm pure water when put one side of the membrane inside the same pure water.

^{※2} Contains backing films.

■The naming rule of the products

IAB **090** **25mm×100m**

Grade	Capillary Flow Rate
075	75sec/40mm
090	90sec/40mm
120	120sec/40mm
135	135sec/40mm
180	180sec/40mm
240	240sec/40mm
4SET(Four Grades Sets)	90,120,135,180sec/40mm

Product Size	Shape	Dimensions	Package
25mm×100m	Roll	25mm×100m	1roll
210mm×297mm	Sheet	210mm×297mm	25pc
210mm×297mm	Sheet	210mm×297mm	2pc [※]
4SET			

[※] If you choose "4SET", two sheets for each grade is Coming (I AB090, I AB120, I AB135, I AB180)

Roll

Product Name	Product Code	CFR(sec/40mm)	Package(pc/box)
I AB075 25mm×100m	10750001	75	1
I AB090 25mm×100m	10751001	90	1
I AB120 25mm×100m	10752001	120	1
I AB135 25mm×100m	10753001	135	1
I AB180 25mm×100m	10754001	180	1
I AB240 25mm×100m	10755001	240	1

■Customized width

In the condition of ordering products with customized width, the minimum ordering units for each are:

Product Size	30mm×100m	35mm×100m	40mm×100m	50mm×100m
Minimum Order Quantity(roll)	8	7	6	5

● If you need further different width, please contact us for more information.

Sheet

● In addition to the above dimensions, please contact us for more information.

Product Name	Product Code	CFR(sec/40mm)	Package(pc/box)
I AB075 210mm×297mm	10750006	75	25
I AB090 210mm×297mm	10751006	90	25
I AB120 210mm×297mm	10752006	120	25
I AB135 210mm×297mm	10753006	135	25
I AB180 210mm×297mm	10754006	180	25
I AB240 210mm×297mm	10755006	240	25

Sample for Exams

Product Name	Product Code	CFR(sec/40mm)	Package(pc/box)
I AB075 210mm×297mm sample	10750007	75	2
I AB090 210mm×297mm sample	10751007	90	2
I AB120 210mm×297mm sample	10752007	120	2
I AB135 210mm×297mm sample	10753007	135	2
I AB180 210mm×297mm sample	10754007	180	2
I AB240 210mm×297mm sample	10755007	240	2
I AB 4SET 210mm×297mm	10758001	90,120,135,180	8 (Types×2pc)

Toward the Future of Science

ADVANTEC[®]

ADVANTEC TOYO KAISHA, LTD.

Overseas Trade Division

Hibiya-Kokusai BLDG 5F,2-2-3,Uchisaiwaicho,Chiyoda-ku,
Tokyo,100-0011 Japan

Phone: +81-3-5521-2160 Fax: +81-3-5521-2182

URL: <https://www.ADVANTEC.co.jp/en/>

E-mail: info-shohin@ADVANTEC.co.jp